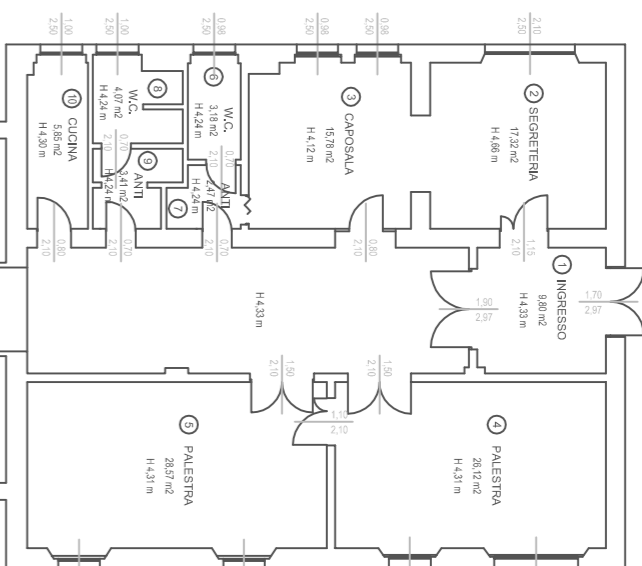
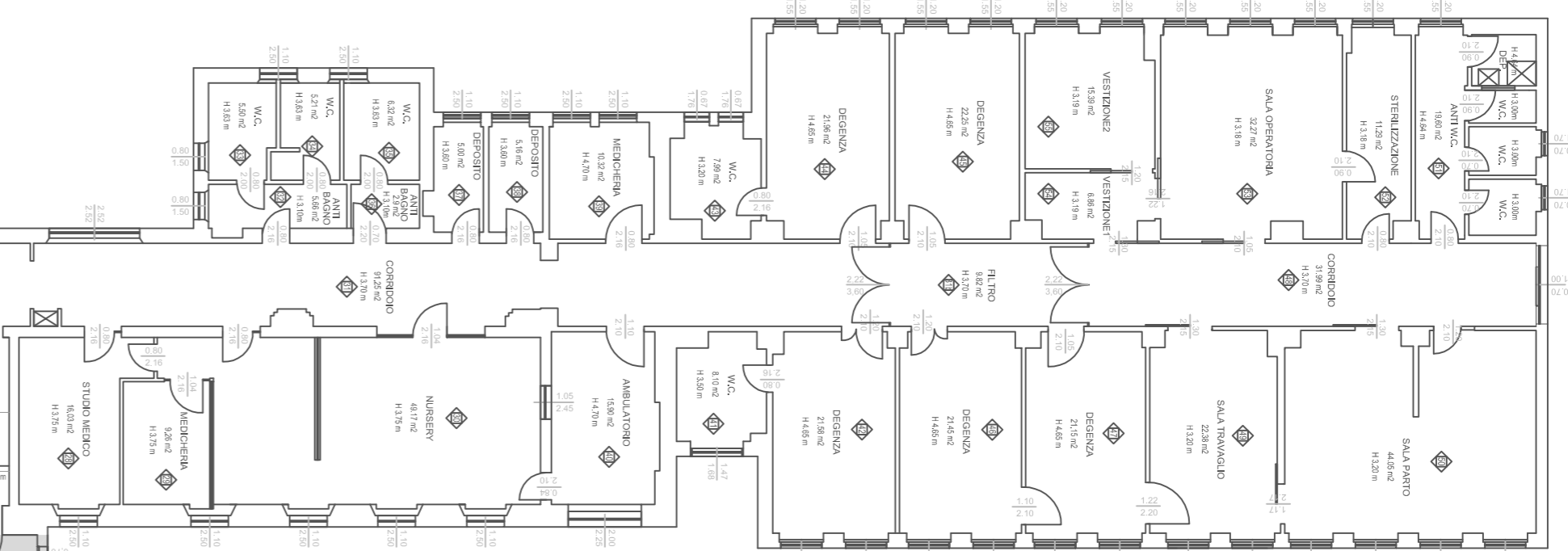


RIABILITAZIONE

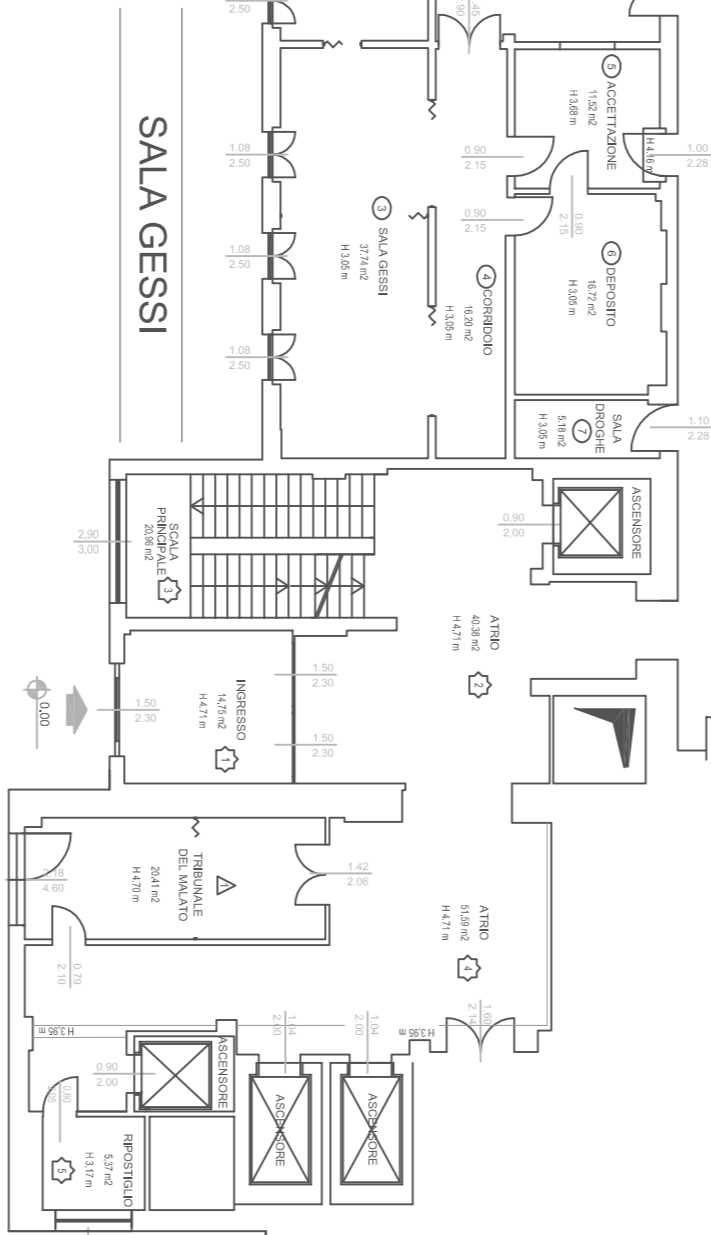


AREA CANTIERE NUOVA DIALISI

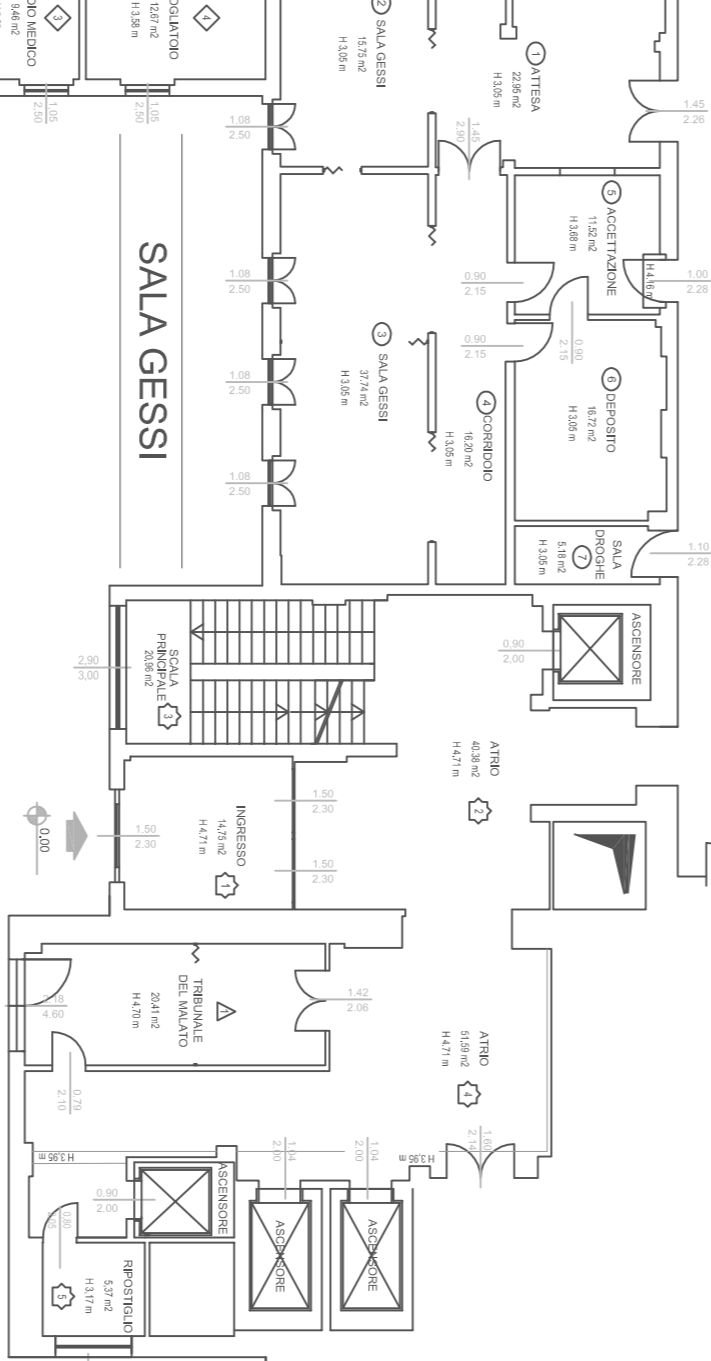
OSTETRICA



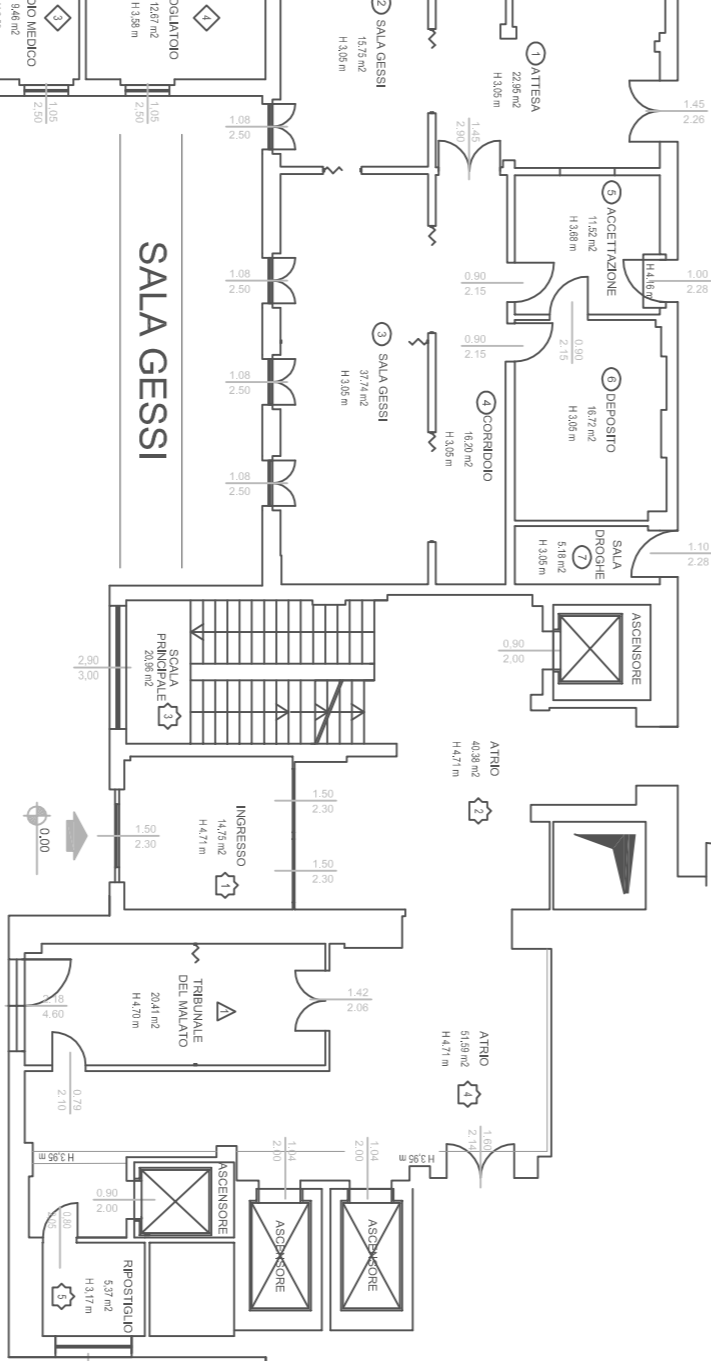
AREA CANTIERE NUOVA DIALISI



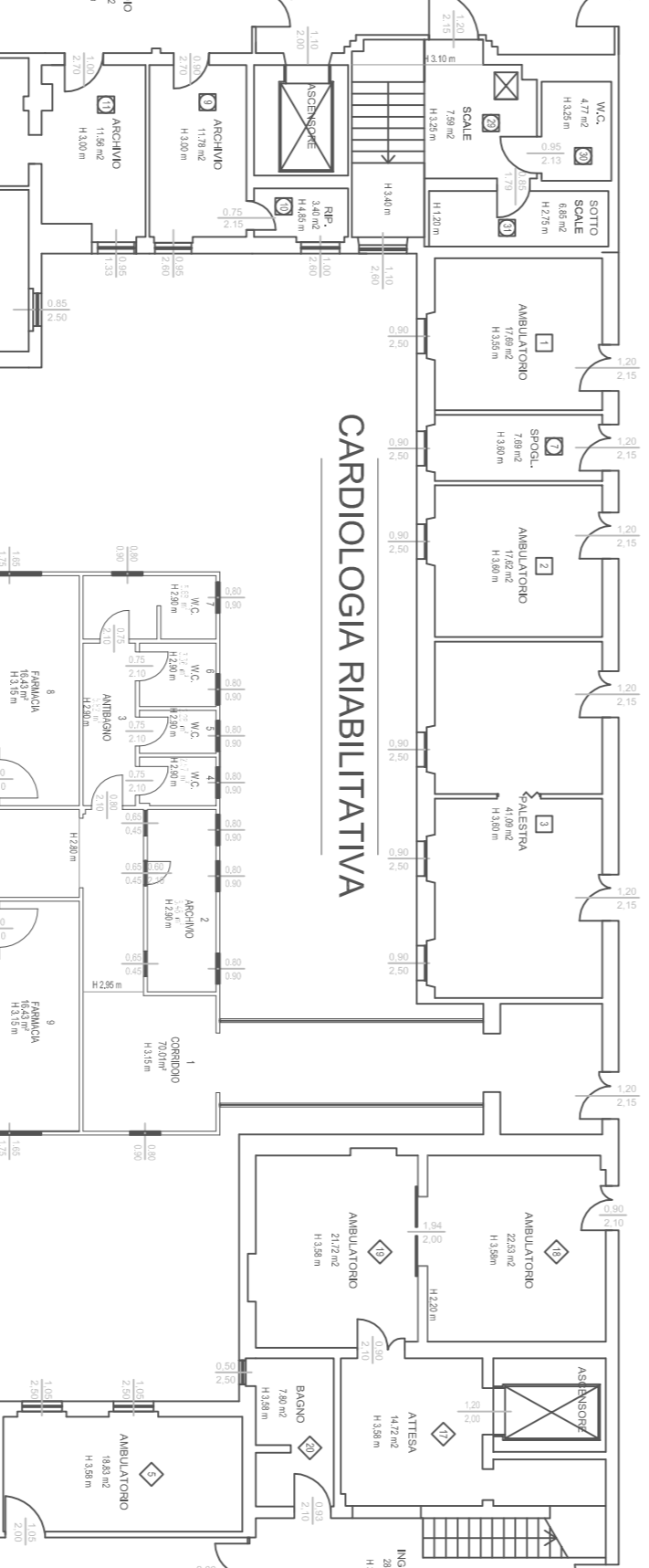
TRIB. DIRITTI D. MALATO



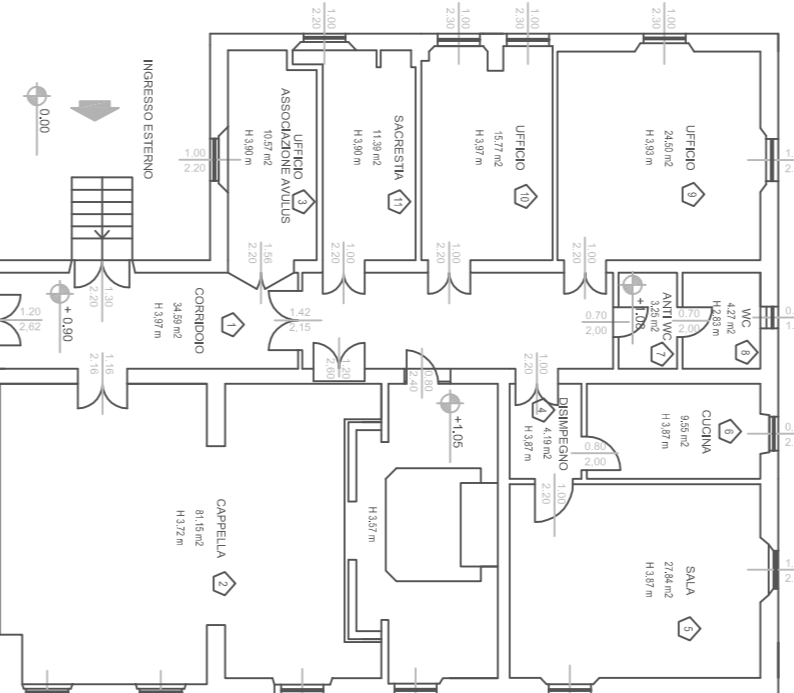
SALA GESSI



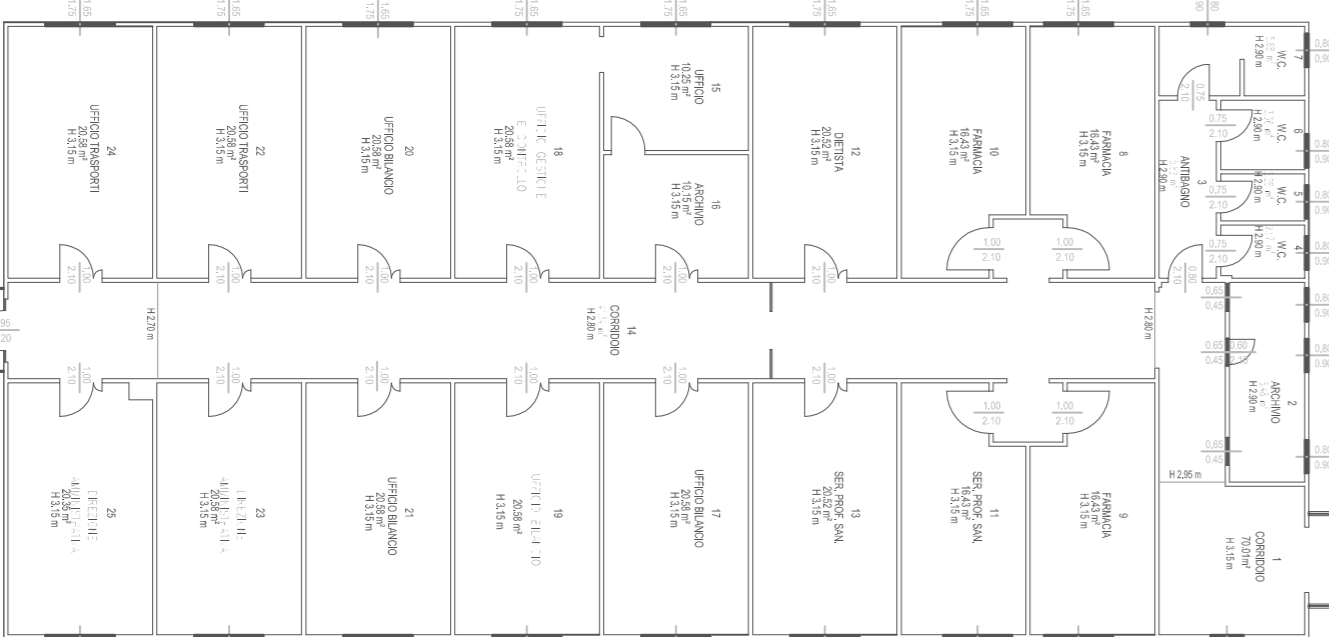
CARDIOLOGIA RIABILITATIVA



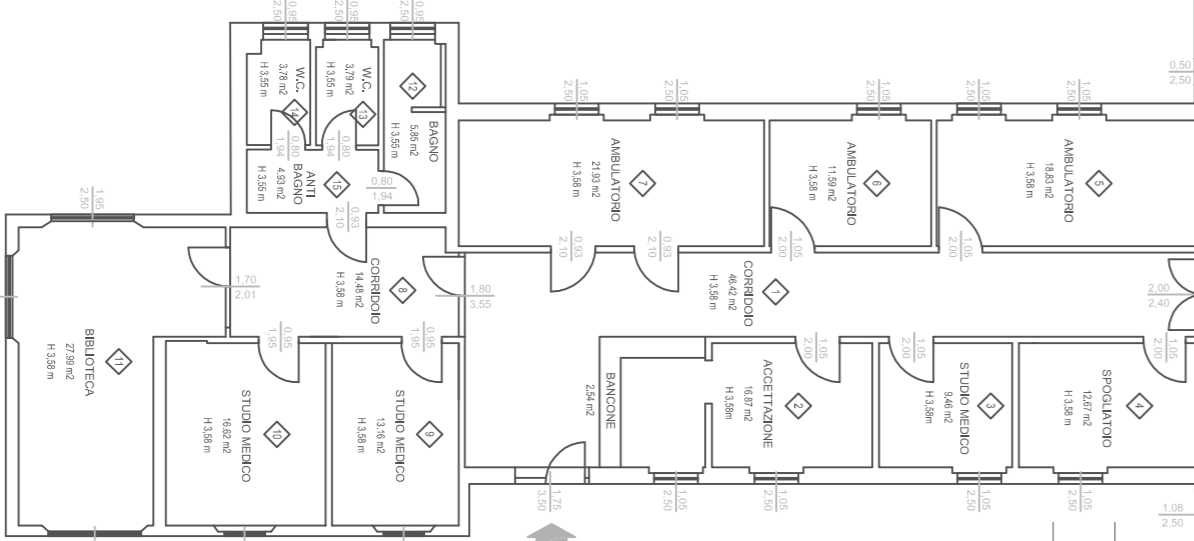
SER. RELIGIOSI - CAPPELLA



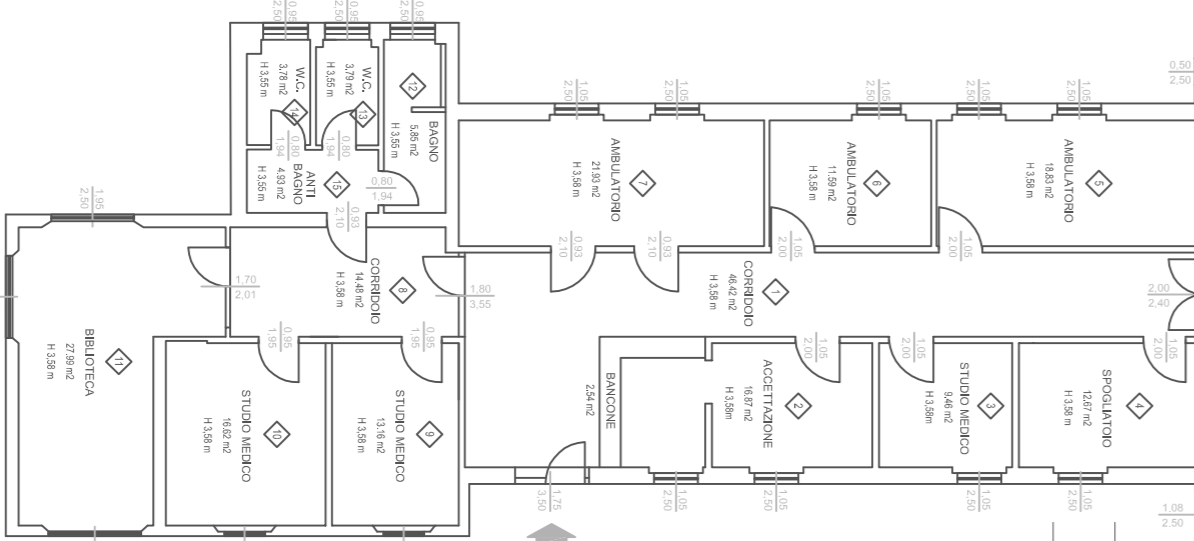
ONCOLOGIA



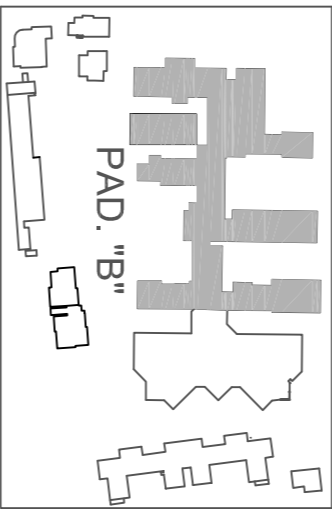
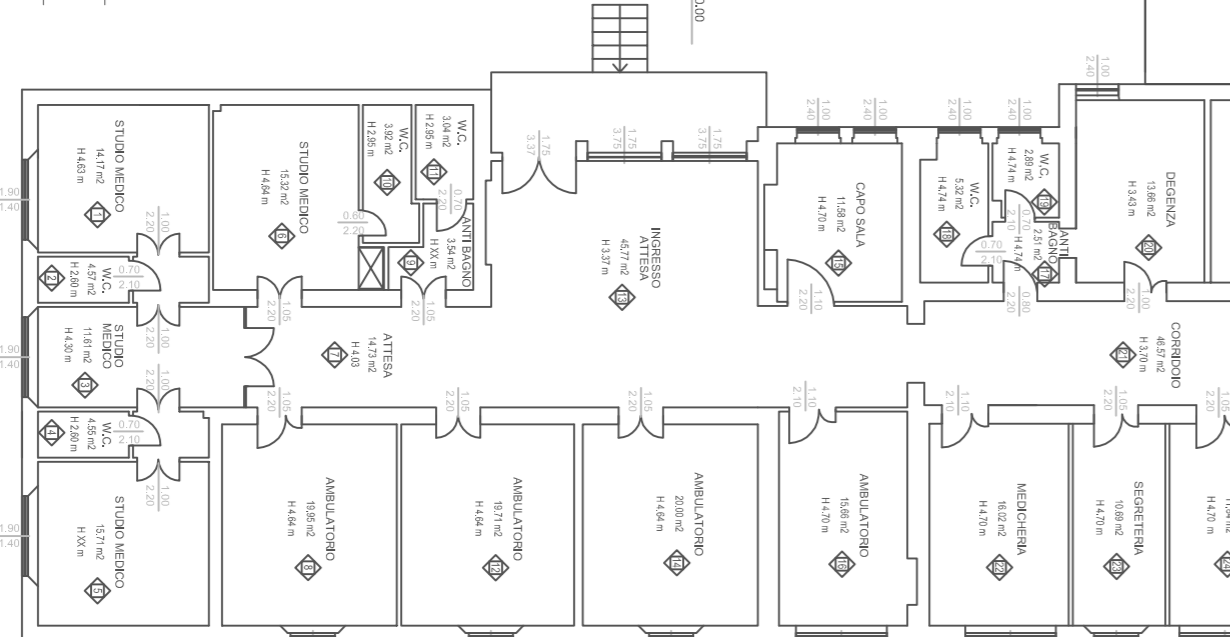
UFFICI



AMBULATORI CARDIOLOGIA



GINECOLOGIA



comitente: A.O.R.M.N.

Azienda ospedaliera Ospedali Riuniti Marche Nord - Pesaro

autore progetto: Dott. Aldo Ricci

responsabile del procedimento: Ing. Giancarlo Conti

coordinatore tecnico-costruttivo: Arch. Simone Rondina

redatto: Presidio Ospedaliero di Fano via Vittorio Veneto - Fano (PU)

ognifica: Rilievi Planimetrici

Pad. B - primo rialzato

scale: 1:1000

ott. 2011

professionista:

Teddi geom. Carmen Maria Diana
via Salaria 184a
00198 Roma (RM)

B2